

### ■ Features

1. ISO 1, ISO 2 solenoid valve.
2. Aluminum alloy body.
3. With single sub base and manifold sub-base which are identical to ISO 1 & ISO 2 standard.
4. Coil nut is available, please refer to page 5-1.



### ■ How to order

PS520 F	—	O2	N	—	S	2	L	E1
5/2 Way	Sub-Base	Port size	Thread	Solenoid	Voltage	Led	Coil type	
Blank : W/O base	O2 : ISO 1	Blank : G	S : Single solenoid	1 : 110VAC	Blank : W/O LED	Blank : DIN		
F : W/I single sub-base	O3 : ISO 2	N : NPT	D : Double solenoid	2 : 220VAC	L : W/I LED	F : Lead wire		
M02 : 2 Valves stack	O4 : ISO 2	R : Rc		6 : 24VAC		E1 : EX-proof 22mm width		
M03 : 3 Valves stack				7 : 12VDC		E2 : EX-proof 30mm width		
Mxx : xx Valves stack				9 : 24VDC		E3 : EX-proof CSA standard		

\* Please refer to page 5-10 for the details of ex-proof coil.

### ■ How to order manifold

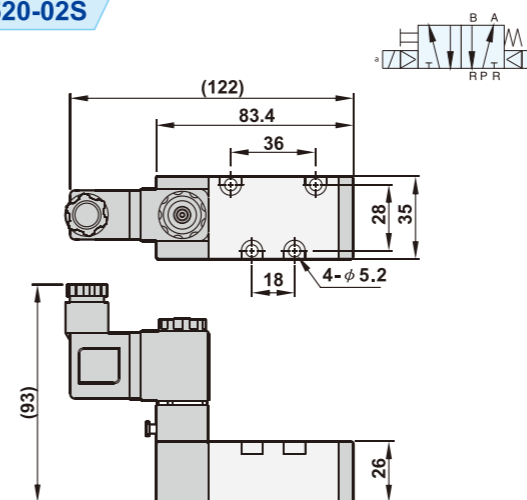
ZESF — O2	ZEPS520B — O2	ZEPS520E — O2
Single sub-base	Manifold sub-base	End plate
Port size	Port size	Port size
O2 : 1/4" (ISO 1)	O2 : 1/4" (ISO 1)	O2 : 3/8" (ISO 1)
O3 : 3/8" (ISO 2)	O3 : 3/8" (ISO 2)	O3 : 1/2" (ISO 2)
O4 : 1/2" (ISO 2)		

### ■ Specifications

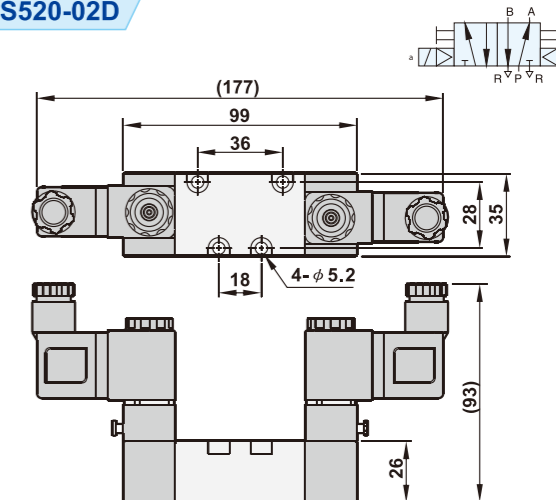
Model	PS520-02-S	PS520-02-D	PS520-03(4)-S	PS520-03(4)-D
Port size	1/4"		3/8" (1/2")	
Body material	Aluminum alloy			
Effective area	29mm <sup>2</sup>		62mm <sup>2</sup>	
Fluid	Compressed air			
Acting	Internal pilot			
Operating pressure range	1.5 ~ 8 kgf/cm <sup>2</sup>			
Proof pressure	9.9 kgf/cm <sup>2</sup>			
Ambient temperature	-10°C ~ 60°C			
Duty cycle	100% ED			
Coil type	DIN			
Protection class	IP65 (DIN 40 050)			
Insulation class	F			
Voltage tolerance	±10%			
Standard voltage	220VAC, 110VAC, 24VDC (The other voltage is optional)			
Net weight (W/I base)	320g (500g)	460g (640g)	700g (980g)	840g (1120g)

### ■ Dimensions

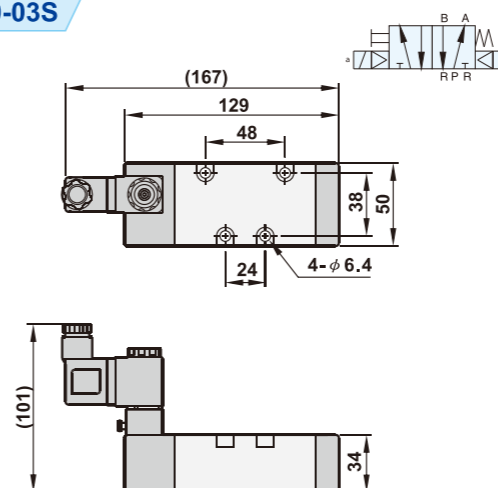
PS520-02S



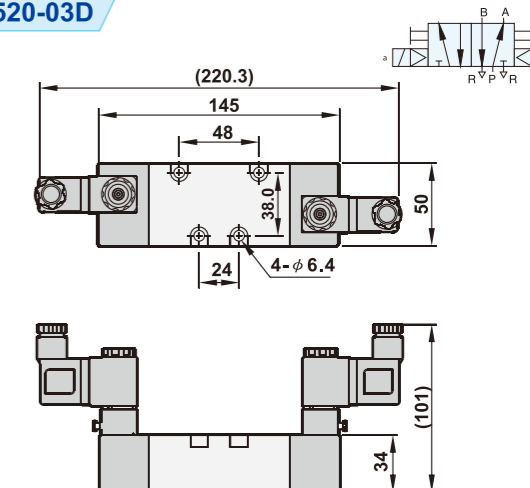
PS520-02D



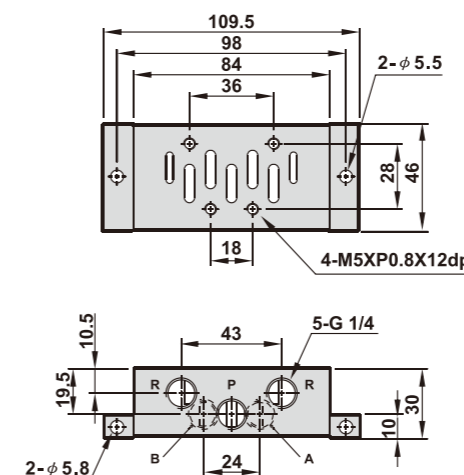
PS520-03S



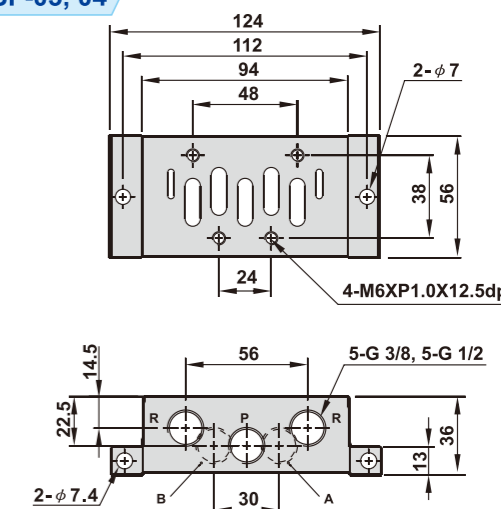
PS520-03D



ZESF-02

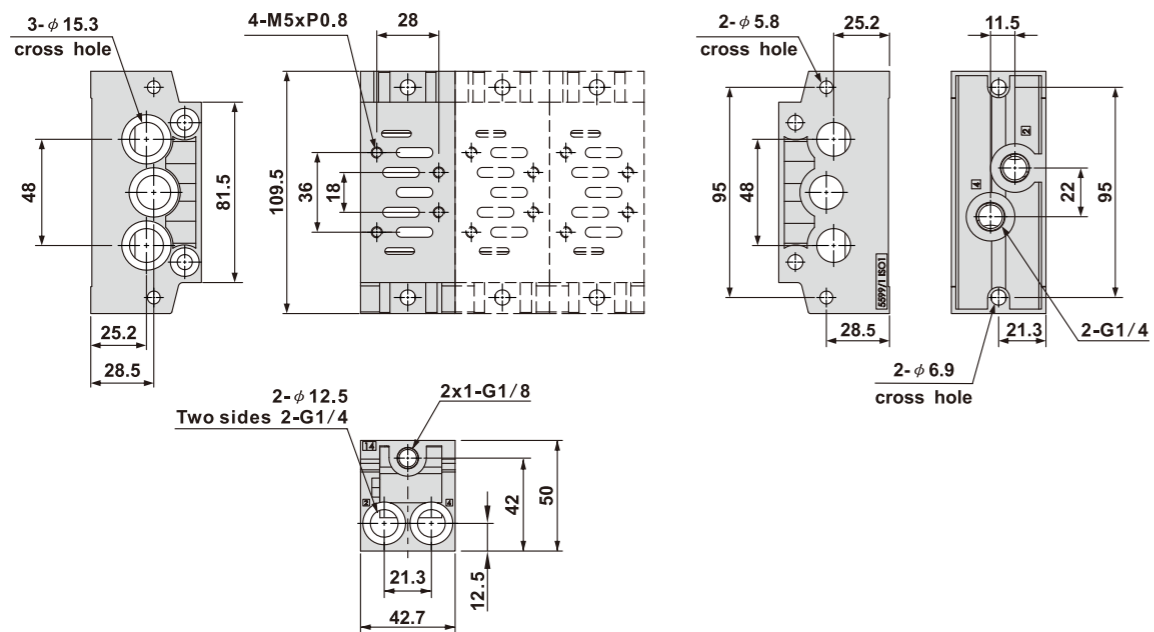


ZESF-03, 04

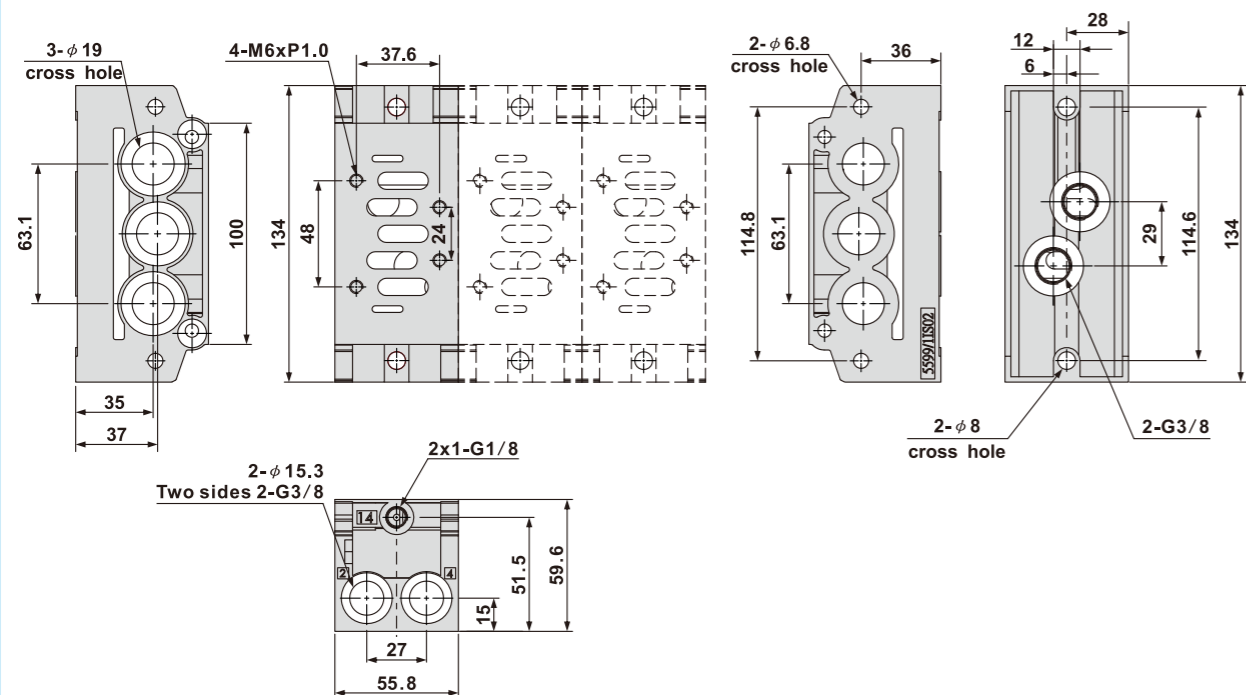


■ Dimensions

ZEPS520B-02 (ISO1 Manifold sub-base)

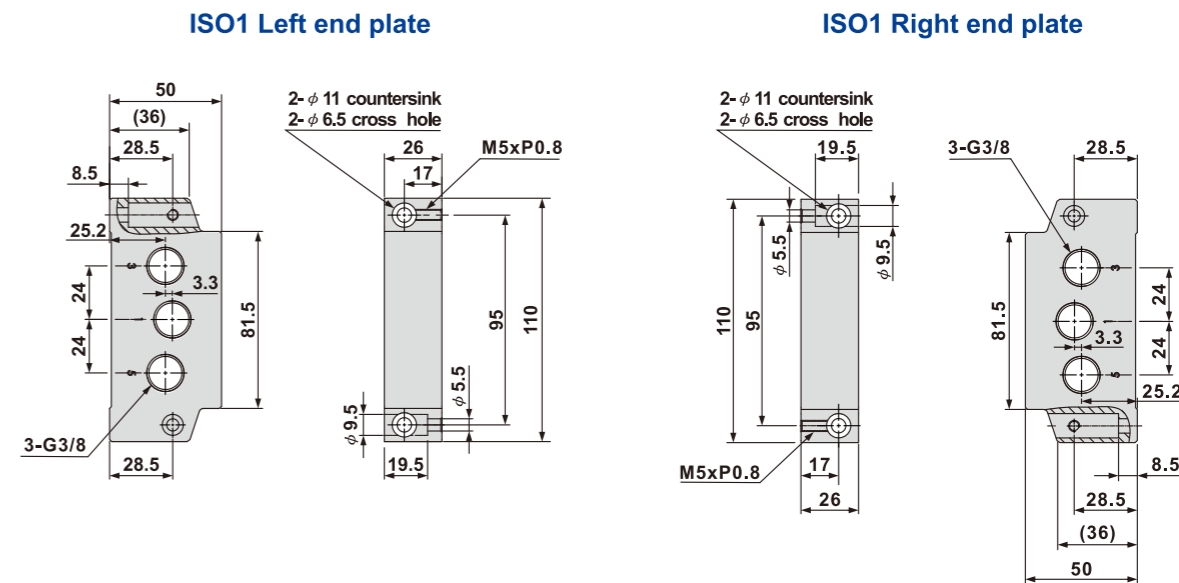


ZEPS520B-03 (ISO2 Manifold sub-base)



■ Dimensions

ZEPS520E-02 (ISO1 End plate)



ZEPS520E-03 (ISO2 End plate)

